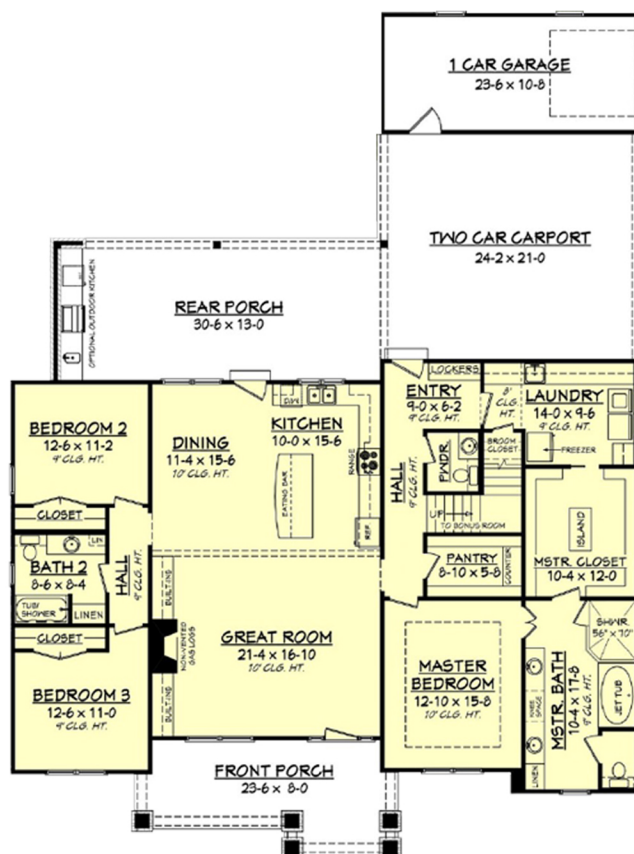


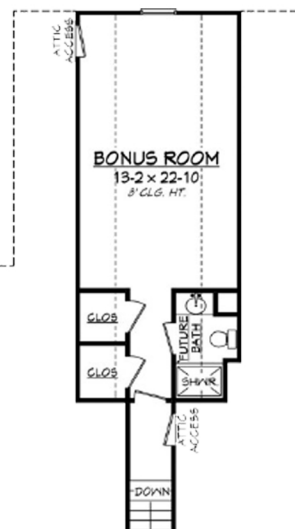


THE CONTEMPORARY FLOOR PLAN

This modern contemporary plan features a large open great room. The design of this plan allows for comfortable living and dining area. There are 3 bedrooms and 2.5 baths with an optional bonus room.



First Floor Plan



Bonus Floor Plan

Square footage does not include bonus room.

SPECIFICATIONS

Main Floor - 2151 sq/ft
3 Bedrooms/ 2.5 Bathrooms

1.5 Stories

HOUSE FEATURES

- Main Floor Bedrooms
- Split Bedrooms
- Kitchen Island
- Great Room Living Room
- Covered Front Porch
- Main Floor Master Bedroom
- Walk In Closet
- Walk In Pantry Cabinet Pantry
- Main Floor Laundry
- Covered Rear Porch



CULLINS
CUSTOM HOMES

405-596-4647 | CULLINSCUSTOMHOMES.COM
INFO@CULLINSCUSTOMHOMES.COM